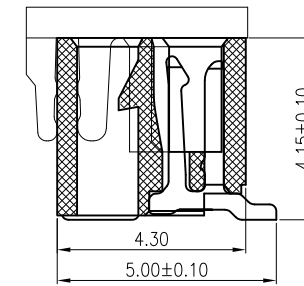
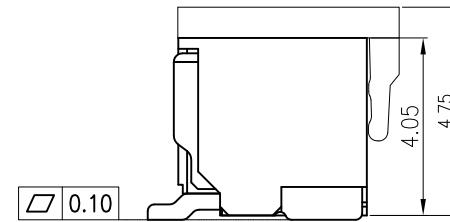
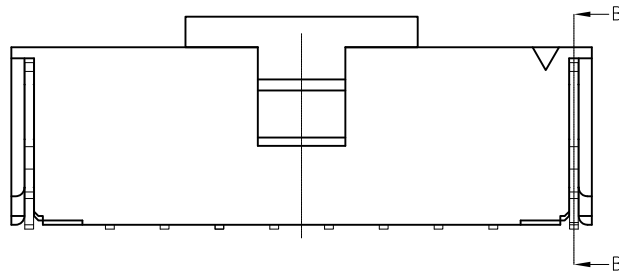
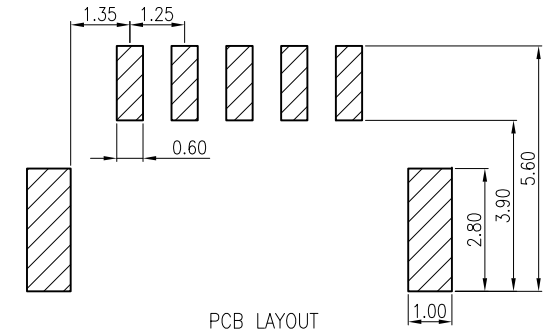
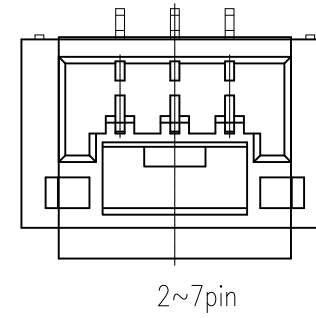
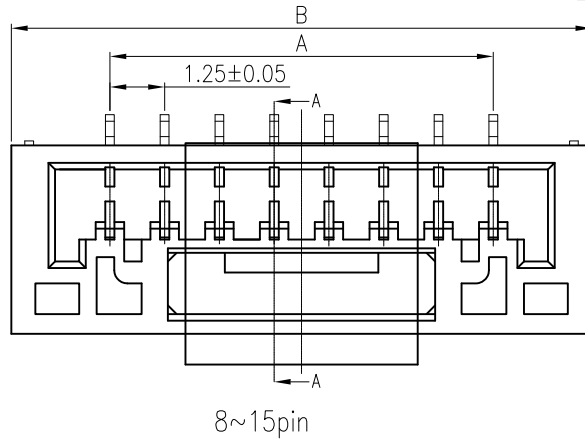
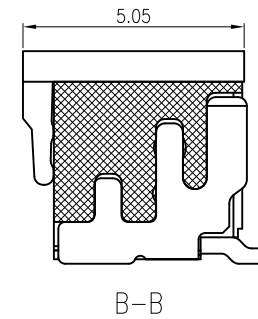
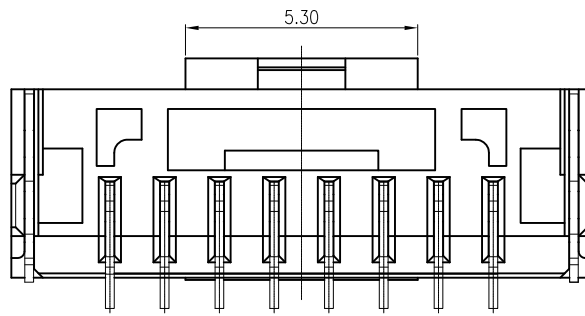


REV	ECN NO.	DESCRIPTION	DATE	APP'D
A/0		RELEASE TO PRODUCTION	01/29/18'	Scrth



Poles	A	B
2	1.25	5.75
3	2.50	7.00
4	3.75	8.25
5	5.00	9.50
6	6.25	10.75
7	7.50	12.00
8	8.75	13.25
9	10.00	14.50
10	11.25	15.75
11	12.50	17.00
12	13.75	18.25
13	15.00	19.50
14	16.25	20.75
15	17.50	22.00



NOTES:

- Material:
Insulation: Thermal Plastic, UL94V-0 (Nature)
Pin: Phosphor bronze/Tin-Plated
Tab: Phosphor bronze/Tin-Plated
- Current Rating: 1A AC, DC
- Voltage Rating: 100V AC, DC
- Temperature Range: -25°C ~ +85°C
- Contact Resistance: 30mΩ Max
- Insulation Resistance: 100MΩ Min
- Withstanding Voltage: 500V AC/minute
- Ordering Code: A1252VS-x-CAP

TOLERANCE X. ±0.30 X.X ±0.25 X.XX ±0.20 Angle ±3° UNLESS OTHERWISE SPECIFIED	APPROVALS		DATE	深圳市金航标电子有限公司		www.kinghelm.com.cn	
	DRAWN <i>Zhang Liao Tao</i>		01/29/18'	KH-A1252VS-8P-CAP		0755-28190160	
	CHK'D <i>Art Shi</i>		01/29/18'	PART NO. A1252VS-x-CAP		TITLE: WIRE TO BOARD, PLUG, PITCH 1.25mm, CRIMP TYPE, ASSEMBLY	
	APP'D <i>Art Shi</i>		01/29/18'	DRAWING NO. EN-A1252VS-x-CAP			
UNITS mm	SCALE 1:1	SIZE: A4	SHEET 1 OF 1	001			REV.A/0