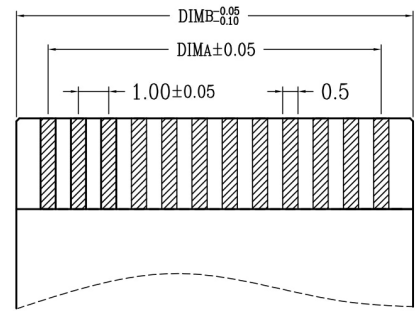
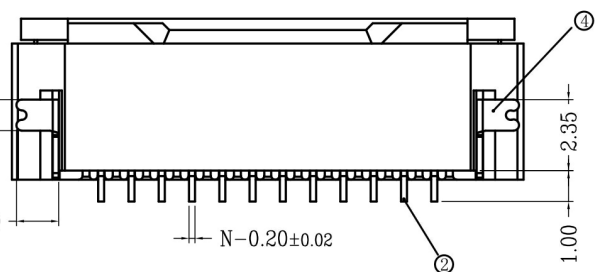
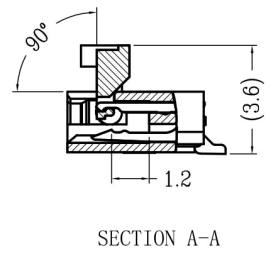
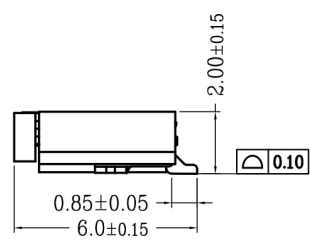
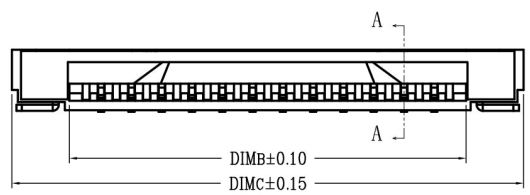
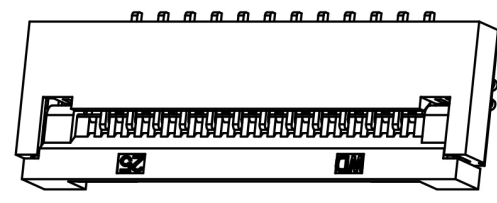
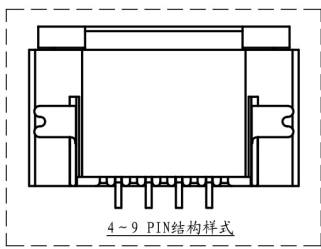
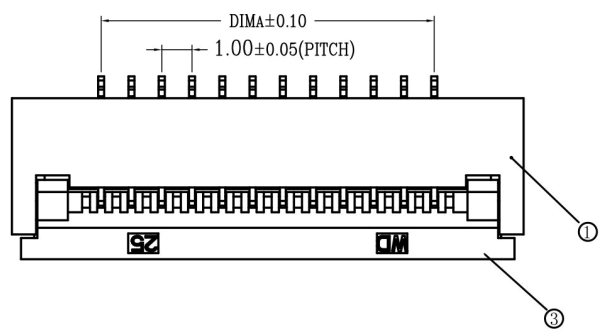


| | | |
|----|--------|-----------|
| 版次 | 变更摘要 | 日期 |
| 1 | 增加料号说明 | 2015/1/28 |

| 序号 | 品名 | 材质 |
|----|----------------|----------------|
| ① | 0.5掀盖胶芯 (H2.0) | LCP UL94V-0 本色 |
| ② | 0.5掀盖端子 (H2.0) | 磷青铜/表面镀锡 |
| ③ | 0.5掀盖后盖 (H2.0) | LCP UL94V-0 黑色 |
| ④ | 0.5掀盖焊片 (H2.0) | 黄铜/表面镀锡 |

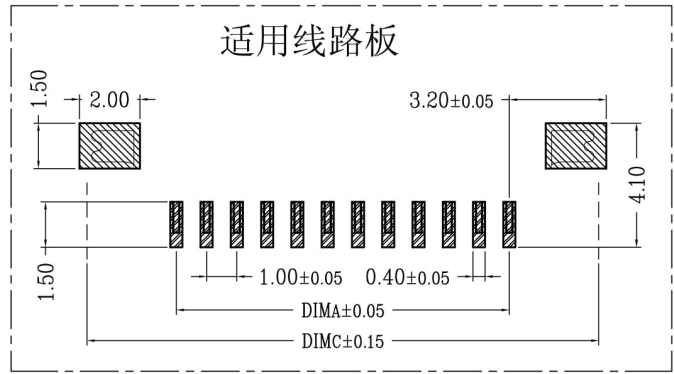


| CKT | DIMA | DIMB | DIMC |
|-----|-------|-------|-------|
| 4 | 3.00 | 5.10 | 8.90 |
| 5 | 4.00 | 6.10 | 9.90 |
| 6 | 5.00 | 7.10 | 10.90 |
| 7 | 6.00 | 8.10 | 11.90 |
| 8 | 7.00 | 9.10 | 12.90 |
| 9 | 8.00 | 10.10 | 13.90 |
| 10 | 9.00 | 11.10 | 14.90 |
| 11 | 10.00 | 12.10 | 15.90 |
| 12 | 11.00 | 13.10 | 16.90 |
| 13 | 12.00 | 14.10 | 17.90 |
| 14 | 13.00 | 15.10 | 18.90 |
| 15 | 14.00 | 16.10 | 19.90 |
| 16 | 15.00 | 17.10 | 20.90 |
| 17 | 16.00 | 18.10 | 21.90 |
| 18 | 17.00 | 19.10 | 22.90 |
| 19 | 18.00 | 20.10 | 23.90 |
| 20 | 19.00 | 21.10 | 24.90 |
| 21 | 20.00 | 22.10 | 25.90 |
| 22 | 21.00 | 23.10 | 26.90 |
| 23 | 22.00 | 24.10 | 27.90 |
| 24 | 23.00 | 25.10 | 28.90 |
| 25 | 24.00 | 26.10 | 29.90 |
| 26 | 25.00 | 27.10 | 30.90 |
| 27 | 26.00 | 28.10 | 31.90 |
| 28 | 27.00 | 29.10 | 32.90 |
| 29 | 28.00 | 30.10 | 33.90 |
| 30 | 29.00 | 31.10 | 34.90 |

- 技术指标:
1. 塑件表面应光洁、无毛边、无明显收缩、缺陷、裂纹等现象。
 2. 温度范围: -25° C~85° C.
 3. 额定电压: 50V, AC/DC(等效).
 4. 接触电阻: ≤0.03Ω.
 5. 绝缘电阻: ≥500MΩ
 6. 产品料号:

适用扁平线

适用线路板



XW10202-*** ** *-**

NO OF CKT (产品PIN数) 00 后盖有LOGO:WD
0W 后盖无LOGO

Plating (电镀方式) 0 端子全雾锡
1 端子全金 (G/F OVERALL)
5 端子半金锡

Packing (包装方式) T: TUBE管装
R: TAPE & REEL卷装

一般公差 (TOLERANCE)
X ±0.50 XX ±1.0
Y ±0.20 ZXX ±0.5
ANGLES ±1°

| | | | |
|---------------------|-------------------------|----------------|--------|
| 深圳市金航标电子有限公司 | | WWW.BDS666.COM | |
| KH-FG1.0-H2.0-30PIN | | 0755-83044319 | |
| 品名 (TITLE) | 1.0 Pitch掀盖卧式下接 (H=2.0) | 制图 (DR) | Anlan |
| 料号 (DWG.NO) | XW10202-*** ** *-** | 校对 (CHKD) | 王涛 |
| 比例 (SCALE) | 1:1 | 审核 (APPD) | 黄志明 |
| 单位 (UNITS) | mm | 张数 (SHEET) | 1 OF 1 |
| 尺寸 (SIZE) | A4 | REV | A |